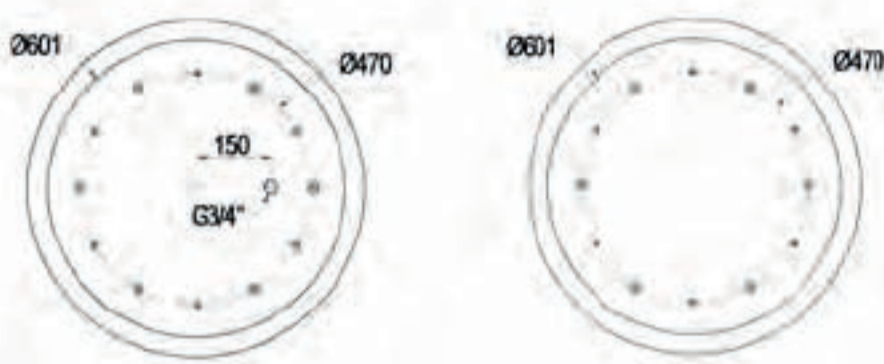
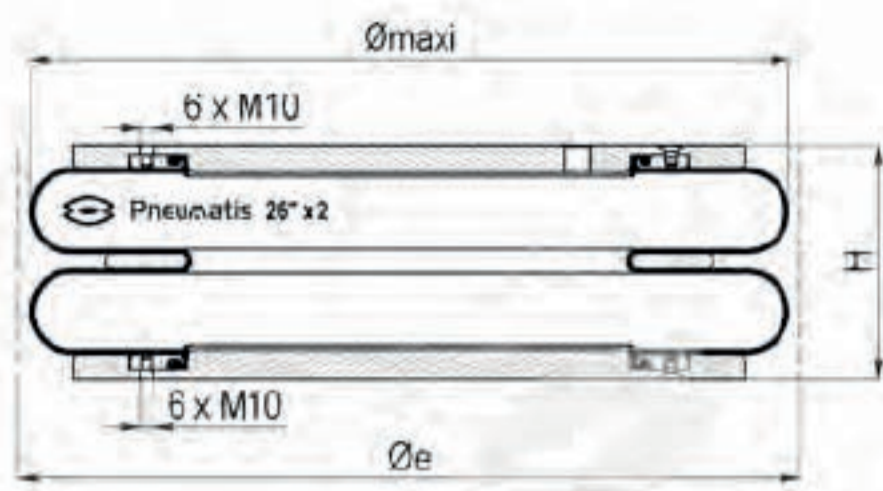


# Bellow 26" x 2 zinc steel

DB2624/B

INDUSTRY



## Technical characteristics

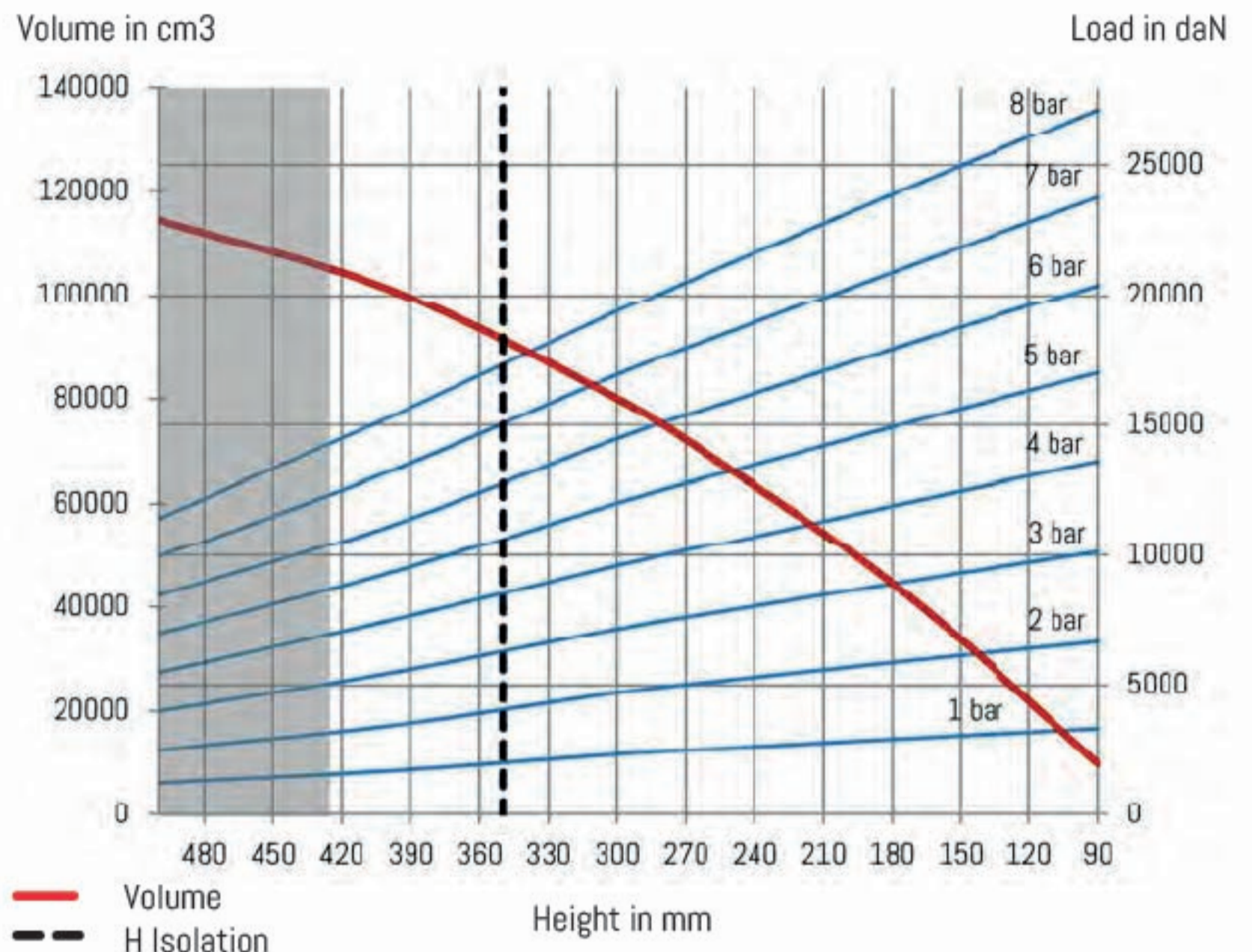
Maximum pressure	8 bar
Burst pressure	20 bar
Maximum angular capacity	
Maximum out of alignment	

Static diameter	660 mm
Maximum diameter	700 mm
Minimum overall diameter (Øe)	750 mm
Minimum height	90 mm
Static height (H)	200 mm
Maximum height	500 mm
Maximum recommended height	425 mm
Total stroke	410 mm
Effective area at static height	2885 cm <sup>2</sup>
Stiffness at 4 bar	05,20 daN/mm
Natural frequency at 4 bar	1,51 Hz
Weight	23,7 kg

## Dynamic characteristics at H = 350mm\*

Pressure	2 bar	4 bar	6 bar
Load (daN)	4185	8590	13000
Volume (dm <sup>3</sup> )	86,2	88,9	91,5
Stiffness (daN/mm)	316	560	792
Natural frequency (Hz)	1,37	1,27	1,23
Isolation rate at 10Hz %	98,1%	98,4%	98,5%

\* Recommended height for better isolation



## Temperatures

Chlorobutyl	-25°C (-35°C static)	+90°C (+100°C static)
-------------	----------------------	-----------------------

## References

DB2624/B Bellow 2 convolutes 26" x 2 Chlorobutyl zinc steel screwed air inlet G<sup>3/4</sup> shifted

## Characteristics in static condition (daN)

Height	2 bar	3 bar	4 bar	5 bar	6 bar	7 bar	8 bar	Vol 5 bar
90	6 655	10 125	13 595	16 983	20 370	23 760	27 150	10000
150	6 135	9 310	12 485	15 608	18 730	21 853	24 975	33750
200	5 675	8 605	11 535	14 435	17 335	20 233	23 130	51250
250	5 200	7 885	10 570	13 243	15 915	18 585	21 255	66250
300	4 705	7 148	9 590	12 030	14 470	16 910	19 350	80000
350	4 121	6 344	8 554	10 726	12 898	15 121	17 357	91580
360	4 014	6 189	8 351	10 475	12 599	14 775	16 965	93660
400	3 430	5 445	7 460	9 295	11 130	13 190	15 250	101250
425	3 303	5 244	7 184	8 951	10 718	12 702	14 686	105245
500	2 520	3 998	5 475	6 960	8 445	9 933	11 420	114500

## Mounting instructions

Fastening torque M10 x 1,5 : 20 to 28 Nm

Indicative value of force to reach the minimum height at atmospheric pressure is 15 daN.