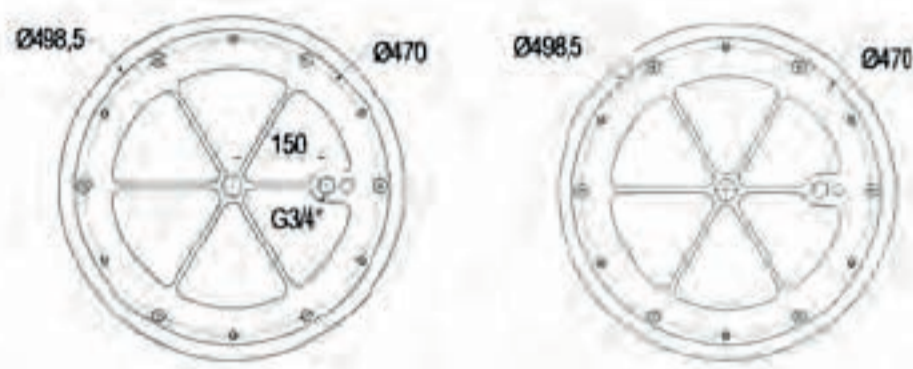
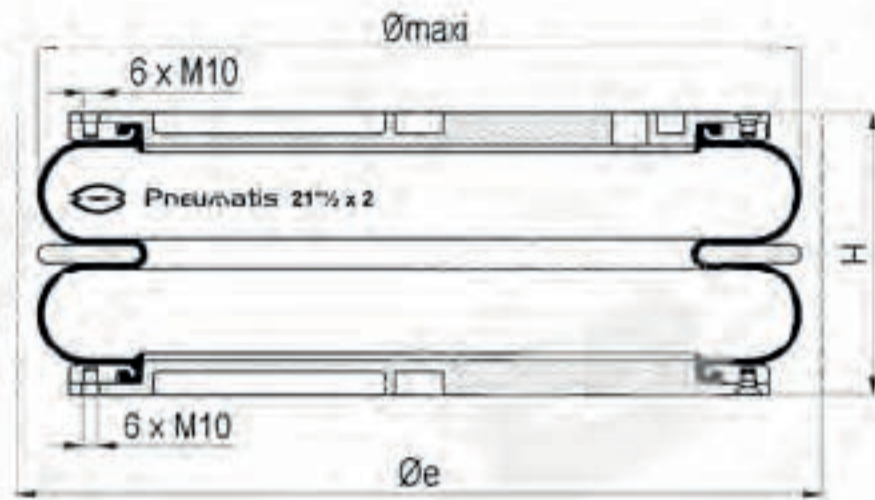


Bellow 21" ½ x 2 alu

DB2124/B

INDUSTRY



Technical characteristics

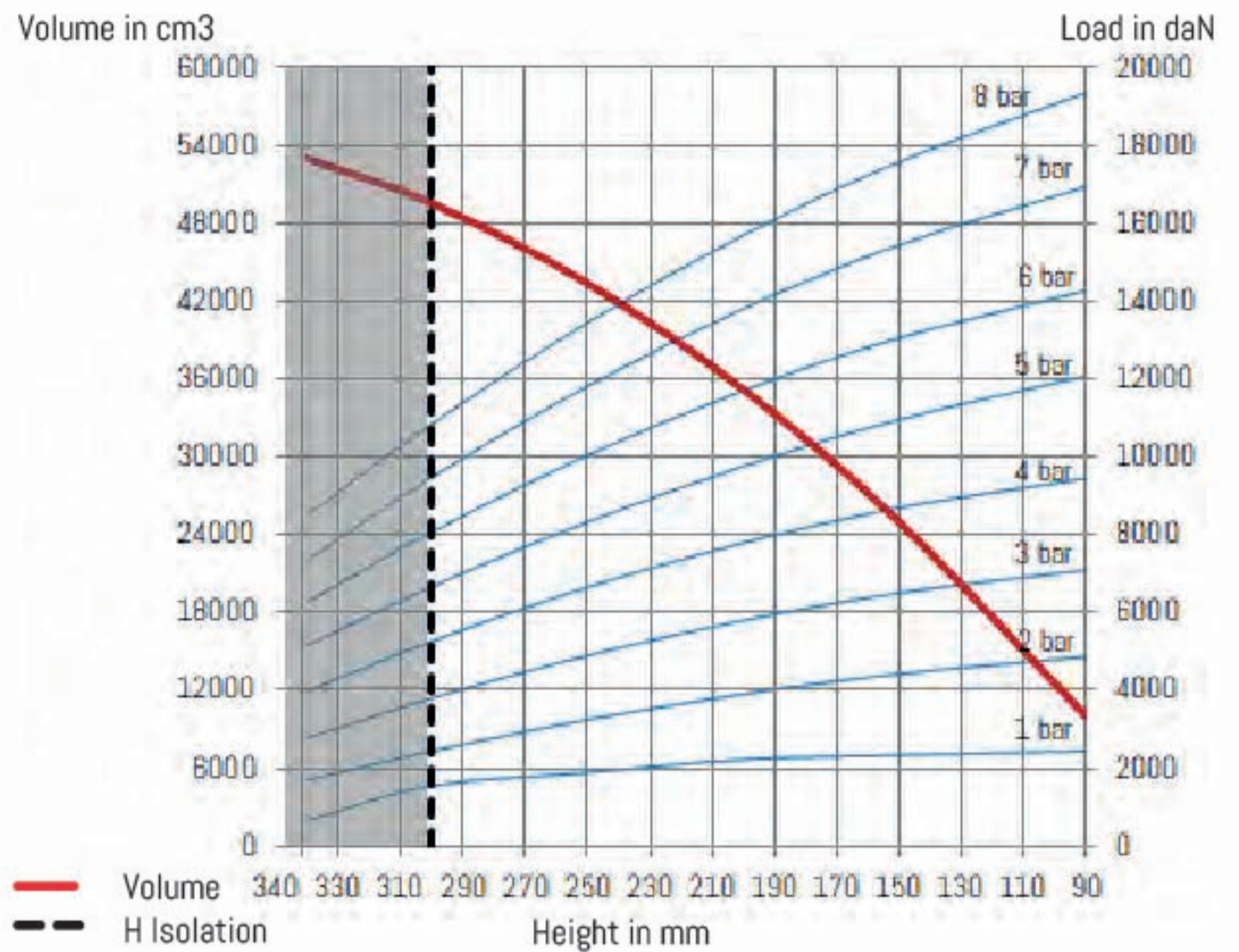
Maximum pressure	8 bar
Burst pressure	20 bar
Maximum angular capacity	15°
Maximum out of alignment	20 mm

Static diameter	546 mm
Maximum diameter	580 mm
Minimum overall diameter (Øe)	630 mm
Minimum height	90 mm
Static height (H)	200 mm
Maximum height	390 mm
Maximum recommended height	350 mm
Total stroke	300 mm
Effective area at static height	1930 cm ²
Stiffness at 4 bar	168 daN/mm
Natural frequency at 4 bar	1,26 Hz
Weight	20,6 kg

Dynamic characteristics at H = 300mm*

Pressure	2 bar	4 bar	6 bar
Load (daN)	2625	5480	8335
Volume (dm ³)	47,5	49,1	50,8
Stiffness (daN/mm)	310	538	756
Natural frequency (Hz)	1,71	1,56	1,50
Isolation rate at 10Hz %	97,0%	97,5%	97,7%

* Recommended height for better isolation



Temperatures

Chlorobutyl	-25°C (-35°C static)	+90°C (+100°C static)
-------------	----------------------	-----------------------

References

DB2124/B	Bellow 2 convolutes 21" ½ x 2 Chlorobutyl aluminium screwed air inlet G ^{3/4} shifted
----------	--

Characteristics in static condition (daN)

Height	2 bar	3 bar	4 bar	5 bar	6 bar	7 bar	8 bar	Vol 5 bar
90	4 864	7 090	9 444	12 080	14 271	16 939	19 359	10016
150	4 426	6 505	8 690	10 956	13 058	15444	17 578	24965
200	3 907	5 801	7 793	9 761	11 706	13 810	15 697	35186
250	3 246	4 900	6 652	8 331	10 045	11 822	13 455	43374
300	2 444	3 802	5 267	6 667	8 075	9 480	10 852	49529
340	1 701	2 782	3 984	5 167	6 276	7 353	8 510	52989

Mounting instructions

Fastening torque M10 x 1,5 : 20 to 28 Nm

Indicative value of force to reach the minimum height at atmospheric pressure is 7 daN.